



**Power Driven Anchors**

***Solid Square Hub Single Helix Power Driven Anchor***

**1-3/8" SQ. SOLID HUB: 4000 FT. LB. MAXIMUM WORKING TORQUE**



PART#	DESCRIPTION	PKG QTY	CTN QTY	CTN WT.
3404	8" SINGLE SOLID SQUARE HUB HELIX POWER DRIVEN ANCHOR 1-3/8" HUB FOR 3/4" & 1" RODS - 4000 FT. LB.	6	1	62
3405	10" SINGLE SOLID SQUARE HUB HELIX POWER DRIVEN ANCHOR 1-3/8" HUB FOR 5/8" RODS - 4000 FT. LB.	4	1	50
3406	10" SINGLE SOLID SQUARE HUB HELIX POWER DRIVEN ANCHOR 1-3/8" HUB FOR 3/4" & 1" RODS - 4000 FT. LB.	4	1	54
3407	12" SINGLE SOLID SQUARE HUB HELIX POWER DRIVEN ANCHOR 1-3/8" HUB 4000LB FOR 5/8" RODS - 4000 FT. LB.	2	1	34
3408	12" SINGLE SOLID SQUARE HUB HELIX POWER DRIVEN ANCHOR 1-3/8" HUB FOR 3/4" & 1" RODS - 4000 FT. LB.	2	1	34

**1-3/8" SQ. SOLID HUB: 6000 FT. LB. MAXIMUM WORKING TORQUE**



PART#	DESCRIPTION	PKG QTY	CTN QTY	CTN WT.
3432	8" SINGLE SOLID SQUARE HUB HELIX POWER DRIVEN ANCHOR 1-3/8" FOR 5/8" RODS - 6000 FT. LB.	6	1	58
3433	8" SINGLE SOLID SQUARE HUB HELIX POWER DRIVEN ANCHOR 1-3/8" FOR 3/4" & 1" RODS - 6000 FT. LB.	6	1	62
3434	10" SINGLE SOLID SQUARE HUB HELIX POWER DRIVEN ANCHOR 1-3/8" HUB FOR 5/8" RODS - 6000 FT. LB.	4	1	50
3435	10" SINGLE SOLID SQUARE HUB HELIX POWER DRIVEN ANCHOR 1-3/8" HUB FOR 3/4" & 1" RODS - 6000 FT. LB.	4	1	60
3436	12" SINGLE SOLID SQUARE HUB HELIX POWER DRIVEN ANCHOR 1-3/8" HUB FOR 5/8" RODS - 6000 FT. LB.	2	1	33
3437	12" SINGLE SOLID SQUARE HUB HELIX POWER DRIVEN ANCHOR 1-3/8" HUB FOR 3/4" & 1" RODS - 6000 FT. LB.	2	1	40
3438	14" SINGLE SOLID SQUARE HUB HELIX POWER DRIVEN ANCHOR 1-3/8" HUB FOR 3/4" & 1" RODS - 6000 FT. LB.	2	1	44
3439	15" SINGLE SOLID SQUARE HUB HELIX POWER DRIVEN ANCHOR 1-3/8" HUB FOR 3/4" & 1" RODS - 6000 FT. LB.	2	1	52

***Solid Square Hub Twin Helix Power Driven Anchor***

**1-3/8" SQ. SOLID HUB: 4000 FT. LB. MAXIMUM WORKING TORQUE**



PART#	DESCRIPTION	PKG QTY	CTN QTY	CTN WT.
3490	8" TWIN SOLID SQUARE HUB HELIX POWER DRIVEN ANCHOR 1-3/8" HUB - 4000 FT. LB. FOR 3/4" AND 1" RODS	1	1	24
3491	10" TWIN SOLID SQUARE HUB HELIX POWER DRIVEN ANCHOR 1-3/8" HUB - 4000 FT. LB. FOR 3/4" AND 1" RODS	1	1	13

**1-3/8" SQ. SOLID HUB: 6000 FT. LB. MAXIMUM WORKING TORQUE**



PART#	DESCRIPTION	PKG QTY	CTN QTY	CTN WT.
3492	4" TWIN SOLID SQUARE HUB HELIX POWER DRIVEN ANCHOR 1-3/8" HUB - 6000 FT. LB. FOR 3/4" AND 1" RODS	1	1	8
3493	8" TWIN SOLID SQUARE HUB HELIX POWER DRIVEN ANCHOR 1-3/8" HUB - 6000 FT. LB. FOR 3/4" AND 1" RODS	1	1	29
3494	10" SOLID SQUARE HUB TWIN HELIX POWER DRIVEN ANCHOR 1-3/8" HUB - 6000 FT. LB. FOR 3/4" AND 1" RODS	1	1	35



**Earth Anchor Power Utility Hardware Catalog**

April 18, 2017



Allied Bolt Products, LLC

**1-1/2" SQ. SOLID HUB: 6000 FT. LB. MAXIMUM WORKING TORQUE**

PART#	DESCRIPTION	PKG QTY	CTN QTY	CTN WT.
3495	8" TWIN SOLID SQUARE HUB HELIX POWER DRIVEN ANCHOR 1-1/2" HUB - 6000 FT. LB. FOR 3/4" AND 1" RODS	1	1	32
3496	10" TWIN SOLID SQUARE HUB HELIX POWER DRIVEN ANCHOR 1-1/2" HUB - 6000 FT. LB. FOR 3/4" AND 1" RODS	1	1	38



Allied Bolt Products, LLC

**1-1/2" SQ. SOLID HUB: 7000 FT. LB. MAXIMUM WORKING TORQUE**

PART#	DESCRIPTION	PKG QTY	CTN QTY	CTN WT.
3497	4" TWIN SOLID SQUARE HUB HELIX POWER DRIVEN ANCHOR 1-1/2" HUB - 7000 FT. LB. FOR 3/4" AND 1" RODS	1	1	18
3498	8" TWIN SOLID SQUARE HUB HELIX POWER DRIVEN ANCHOR 1-1/2" HUB - 7000 FT. LB. FOR 3/4" AND 1" RODS	1	1	32
3499	10" TWIN SOLID SQUARE HUB HELIX POWER DRIVEN ANCHOR 1-1/2" HUB - 7000 FT. LB. FOR 3/4" AND 1" RODS	1	1	38

**Socket Drive Power Installed Anchor**

**2-1/4" SOCKET DRIVE HUB POWER INSTALLED ANCHOR: 8000 FT. LB. MAXIMUM WORKING TORQUE**



Allied Bolt Products, LLC

PART#	DESCRIPTION	PKG QTY	CTN QTY	CTN WT.
3500	8" SOCKET ANCHOR 8000 FT. LB. FOR 5/8" RODS	6	1	49
3501	8" SOCKET ANCHOR 8000 FT. LB. FOR 3/4" AND 1" RODS	6	1	49
3502	10" SOCKET ANCHOR 8000 FT. LB. FOR 5/8" RODS	4	1	47
3503	10" SOCKET ANCHOR 8000 FT. LB. FOR 3/4" AND 1" RODS	4	1	47
3504	12" SOCKET ANCHOR 8000 FT. LB. FOR 3/4" AND 1" RODS	2	1	46
3505	14" SOCKET ANCHOR 8000 FT. LB. FOR 3/4" AND 1" RODS	2	1	54

**2-1/4" SOCKET DRIVE HUB POWER INSTALLED ANCHOR: 10000 FT. LB. MAXIMUM WORKING TORQUE**



Allied Bolt Products, LLC

PART#	DESCRIPTION	PKG QTY	CTN QTY	CTN WT.
3511	8" SOCKET ANCHOR 10000 FT. LB. FOR 3/4" AND 1" RODS	6	1	75
3512	10" SOCKET ANCHOR 10000 FT. LB. FOR 3/4" AND 1" RODS	4	1	68
3512B	10" SOCKET ANCHOR 10000 FT. LB. FOR 3/4" AND 1" RODS	4	1	68
3513	12" SOCKET ANCHOR 10000 FT. LB. FOR 3/4" AND 1" RODS	2	1	46
3514	14" SOCKET ANCHOR 10000 FT. LB. FOR 3/4" AND 1" RODS	2	1	56

**2-1/2" SOCKET DRIVE HUB POWER INSTALLED ANCHOR: 8000 FT. LB. MAXIMUM WORKING TORQUE**



Allied Bolt Products, LLC

PART#	DESCRIPTION	PKG QTY	CTN QTY	CTN WT.
3520	8" SOCKET ANCHOR 8000 FT. LB. FOR 5/8" RODS	6	1	90
3521	8" SOCKET ANCHOR 8000 FT. LB. FOR 3/4" AND 1" RODS	6	1	92
3522	10" SOCKET ANCHOR 8000 FT. LB. FOR 5/8" RODS	4	1	128
3523	10" SOCKET ANCHOR 8000 FT. LB. FOR 3/4" AND 1" RODS	4	1	75
3524	12" SOCKET ANCHOR 8000 FT. LB. FOR 5/8" RODS	2	1	54
3525	12" SOCKET ANCHOR 8000 FT. LB. FOR 3/4" AND 1" RODS	2	1	54
3526	14" SOCKET ANCHOR 8000 FT. LB. FOR 3/4" AND 1" RODS	2	1	64

**2-1/2" SOCKET DRIVE HUB POWER INSTALLED ANCHOR: 15000 FT. LB. MAXIMUM WORKING TORQUE**



PART#	DESCRIPTION	PKG QTY	CTN QTY	CTN WT.
3530	8" SOCKET ANCHOR 15000 FT. LB. FOR 3/4" AND 1" RODS	6	1	109
3531	10" SOCKET ANCHOR 15000 FT. LB. FOR 3/4" AND 1" RODS	2	1	44
3532	12" SOCKET ANCHOR 15000 FT. LB. FOR 3/4" AND 1" RODS	2	1	53
3533	14" SOCKET ANCHOR 15000 FT. LB. FOR 3/4" AND 1" RODS	2	1	64

**Power Driven Anchor Rods**

Anchor Rod for Helical Anchors

**ANCHOR ROD FOR HELICAL ANCHORS**



PART#	DESCRIPTION	PKG QTY	CTN QTY	CTN WT.
3420	5/8" X 3-1/2' ANCHOR ROD FOR HELICAL ANCHORS	5	1	18
3423	5/8" X 7' ANCHOR ROD FOR HELICAL ANCHORS	5	1	37
3421	3/4" X 3-1/2' ANCHOR ROD FOR HELICAL ANCHORS	5	1	25
3424	3/4" X 7' ANCHOR ROD FOR HELICAL ANCHORS	5	1	47
3598	1" X 1-1/2' ANCHOR ROD EXT FOR HELICAL ANCHORS	16	1	64
3422	1" X 3-1/2' ANCHOR ROD FOR HELICAL ANCHORS	5	1	48
3425	1" X 7' ANCHOR ROD FOR HELICAL ANCHORS	5	1	90
3426	1" X 10' ANCHOR ROD FOR HELICAL ANCHORS	1	1	25

Anchor Rod And Eye Nut Assemblies For Helical Hub Anchors

**ANCHOR ROD WITH ASSEMBLED SINGLE EYE NUT**



PART#	DESCRIPTION	PKG QTY	CTN QTY	CTN WT.
3601	5/8" X 3-1/2' ANCHOR ROD WITH ASSEMBLED SINGLE EYE NUT	1	1	5
3610	5/8" X 7' ANCHOR ROD WITH ASSEMBLED SINGLE EYE NUT	1	1	9
3604	3/4" X 3-1/2' ANCHOR ROD WITH ASSEMBLED SINGLE EYE NUT	1	1	7
3613	3/4" X 7' ANCHOR ROD WITH ASSEMBLED SINGLE EYE NUT	1	1	12
3607	1" X 3-1/2' ANCHOR ROD WITH ASSEMBLED SINGLE EYE NUT	1	1	12
3616	1" X 7' ANCHOR ROD WITH ASSEMBLED SINGLE EYE NUT	1	1	18

**ANCHOR ROD WITH ASSEMBLED TWIN EYE NUT**



PART#	DESCRIPTION	PKG QTY	CTN QTY	CTN WT.
3602	5/8" X 3-1/2' ANCHOR ROD WITH ASSEMBLED TWIN EYE NUT	1	1	6
3611	5/8" X 7' ANCHOR ROD WITH ASSEMBLED TWIN EYE NUT	1	1	10
3605	3/4" X 3-1/2' ANCHOR ROD WITH ASSEMBLED TWIN EYE NUT	1	1	8
3614	3/4" X 7' ANCHOR ROD WITH ASSEMBLED TWIN EYE NUT	1	1	12
3608	1" X 3-1/2' ANCHOR ROD WITH ASSEMBLED TWIN EYE NUT	1	1	12
3617	1" X 7' ANCHOR ROD WITH ASSEMBLED TWIN EYE NUT	1	1	19

**ANCHOR ROD WITH ASSEMBLED TRIPLE EYE NUT**



PART#	DESCRIPTION	PKG QTY	CTN QTY	CTN WT.
3603	5/8" X 3-1/2' ANCHOR ROD WITH ASSEMBLED TRIPLE EYE NUT	1	1	8
3612	5/8" X 7' ANCHOR ROD WITH ASSEMBLED TRIPLE EYE NUT	1	1	10
3606	3/4" X 3-1/2' ANCHOR ROD WITH ASSEMBLED TRIPLE EYE NUT	1	1	9
3615	3/4" X 7' ANCHOR ROD WITH ASSEMBLED TRIPLE EYE NUT	1	1	12
3609	1" X 3-1/2' ANCHOR ROD WITH ASSEMBLED TRIPLE EYE NUT	1	1	12
3618	1" X 7' ANCHOR ROD WITH ASSEMBLED TRIPLE EYE NUT	1	1	19



Anchor Rod and Coupling Nut Assemblies for Helical Hub Anchors

**ANCHOR ROD WITH ASSEMBLED COUPLING NUT**

PART#	DESCRIPTION	PKG QTY	CTN QTY	CTN WT.
3640	5/8" X 3-1/2' ANCHOR ROD WITH ASSEMBLED COUPLING NUT	1	1	5
3643	5/8" X 7' ANCHOR ROD WITH ASSEMBLED COUPLING NUT	1	1	8
3641	3/4" X 3-1/2' ANCHOR ROD WITH ASSEMBLED COUPLING NUT	1	1	6
3644	3/4" X 7' ANCHOR ROD WITH ASSEMBLED COUPLING NUT	1	1	10
3642	1" X 3-1/2' ANCHOR ROD WITH ASSEMBLED COUPLING NUT	1	1	11
3645	1" X 7' ANCHOR ROD WITH ASSEMBLED COUPLING NUT	1	1	16



Protected Power Anchor Rod for Helical Anchor

PART#	DESCRIPTION	PKG QTY	CTN QTY	CTN WT.
3422PRO	1" x 3-1/2' PROTECTED POWER ANCHOR ROD FOR HELICAL ANCHOR	5	1	90
3425PRO	1" X 7' PROTECTED POWER ANCHOR ROD FOR HELICAL ANCHOR	5	1	90

**Power Driven Anchor Rod Accessories**



Eye Nut for Helical Anchors

**SINGLE EYE NUT FOR HELICAL ANCHORS**

PART#	DESCRIPTION	PKG QTY	CTN QTY	CTN WT.
5049	5/8" SINGLE EYE NUT FOR HELICAL ANCHORS	50	1	42
5095	3/4" AND 1" SINGLE EYE NUT FOR HELICAL ANCHORS	20	1	34



**DOUBLE EYE NUT FOR HELICAL ANCHORS**

PART#	DESCRIPTION	PKG QTY	CTN QTY	CTN WT.
5041	5/8" DOUBLE EYE NUT FOR HELICAL ANCHORS	25	1	30
5042	3/4" AND 1" DOUBLE EYE NUT FOR HELICAL ANCHORS	25	1	50



**TRIPLE EYE NUT FOR HELICAL ANCHORS**

PART#	DESCRIPTION	PKG QTY	CTN QTY	CTN WT.
5044	5/8" TRIPLE EYE NUT FOR HELICAL ANCHORS	20	1	46
5043	3/4" AND 1" TRIPLE EYE NUT FOR HELICAL ANCHORS	20	1	46



**Earth Anchor Power Utility Hardware Catalog**

April 18, 2017



**Anchor Rod Coupling Nut**  
**COUPLING NUT FOR ANCHOR RODS**

PART#	DESCRIPTION	PKG QTY	CTN QTY	CTN WT.
5052	COUPLING NUT FOR 5/8" ANCHOR RODS	25	1	13
5053	COUPLING NUT FOR 3/4" AND 1" ANCHOR RODS	25	1	13



**Bonding Clamp For Power Anchor Rod**  
**SINGLE STRAND BONDING CLAMP FOR POWER ANCHOR ROD**

PART#	DESCRIPTION	PKG QTY	CTN QTY	CTN WT.
7901	SINGLE STRAND BONDING CLAMP FOR POWER ANCHOR ROD 5/8" DIAMETER	25	1	7
7902	SINGLE STRAND BONDING CLAMP FOR POWER ANCHOR ROD 3/4" AND 1" DIAMETER	25	1	9



**DOUBLE STRAND BONDING CLAMP FOR POWER ANCHOR ROD**

PART#	DESCRIPTION	PKG QTY	CTN QTY	CTN WT.
7903	DOUBLE STRAND BONDING CLAMP FOR POWER ANCHOR ROD 5/8", 3/4" AND 1" DIAMETER	25	1	9



**TRIPLE STRAND BONDING CLAMP FOR POWER ANCHOR ROD**

PART#	DESCRIPTION	PKG QTY	CTN QTY	CTN WT.
7904	TRIPLE STRAND BONDING CLAMP FOR POWER ANCHOR ROD 5/8", 3/4" AND 1" DIAMETER	25	1	10

**Multi Helix Lead Sections**



**MULTI HELIX ANCHOR RATED 5,000 FT LBS**  
**SQUARE SHANK MULTI HELIX SCREW ANCHOR**

PART#	DESCRIPTION	PKG QTY	CTN QTY	CTN WT.
3551	36" SQUARE SHANK MULTI HELIX ANCHOR WITH 8" AND 10" HELICES	1	1	50
3582	42" SQUARE SHANK MULTI HELIX ANCHOR WITH 10" AND 12" HELICES	1	1	88
3550	60" SQUARE SHANK MULTI HELIX ANCHOR WITH 8" HELIX	1	1	44
3559	60" SQUARE SHANK MULTI HELIX ANCHOR WITH 10" AND 12" HELICES	1	1	88
3552	60" SQUARE SHANK MULTI HELIX ANCHOR WITH 4", 8", AND 10" HELICES	1	1	56
3553	66" SQUARE SHANK MULTI HELIX ANCHOR WITH 8", 10", AND 12" HELICES	1	1	88
3554	84" SQUARE SHANK MULTI HELIX ANCHOR WITH 6", 8", AND 10" HELICES	1	1	70
3555	84" SQUARE SHANK MULTI HELIX ANCHOR WITH 10", 12", AND 14" HELICES	1	1	88
3556	120" SQUARE SHANK MULTI HELIX ANCHOR WITH 10", 12", AND 14" HELICES	1	1	87
3557	120" SQUARE SHANK MULTI HELIX ANCHOR WITH (3) 14" HELICES	1	1	122
3558	120" SQUARE SHANK MULTI HELIX ANCHOR WITH 8", 10", 12", AND 14" HELICES	1	1	125



Allied Bolt Products LLC

**MULTI HELIX ANCHOR RATED 7,000 FT LBS**

**SQUARE SHANK MULTI HELIX ANCHOR 7,000LB RATING**

PART#	DESCRIPTION	PKG QTY	CTN QTY	CTN WT.
35510	36" SQUARE SHANK MULTI HELIX ANCHOR WITH 8" AND 10" HELICES 7,000LB RATING	1	1	46
35821	42" SQUARE SHANK MULTI HELIX ANCHOR WITH 10" AND 12" HELICES 7,000LB RATING	1	1	45
35530	66" SQUARE SHANK MULTI HELIX ANCHOR WITH 8", 10", AND 12" HELICES 7,000LB RATING	1	1	65
35550	84" SQUARE SHANK MULTI HELIX ANCHOR WITH 10", 12, AND 14" HELICES 7,000LB RATING	1	1	96



Allied Bolt Products LLC

**Round Shank Multi Helix Anchor Rated 2,300 FT LBS**

**SINGLE HELIX ROUND SHANK ANCHOR 2,300LB RATING**

PART#	DESCRIPTION	PKG QTY	CTN QTY	CTN WT.
3584	84" SINGLE HELIX ROUND SHANK ANCHOR WITH 10" HELIX 2,300LB RATING	1	1	47
3585	84" TWIN HELIX ROUND SHANK ANCHOR WITH 8" AND 10" HELICES 2,300LB RATING	1	1	50
3586	84" TRIPLE HELIX ROUND SHANK ANCHOR WITH 8" 10" & 12" HELICES 2,300LB RATING	1	1	50
3587	84" TRIPLE HELIX ROUND SHANK ANCHOR WITH (3) 10" HELICES 2,300LB RATING	1	1	47

**Extensions and Adaptors For Multi Helix Anchors**



Allied Bolt Products LLC

**EXTENSION FOR MULTI HELIX ANCHOR 5,500 FT LB**

**EXTENSION FOR MULTI HELIX SCREW ANCHOR 5,500 FT LBS**

PART#	DESCRIPTION	PKG QTY	CTN QTY	CTN WT.
3560	3-1/2' EXTENSION FOR MULTI HELIX SCREW ANCHOR	1	1	27
3561	5' EXTENSION FOR MULTI HELIX SCREW ANCHOR	1	1	40
3562	7' EXTENSION FOR MULTI HELIX SCREW ANCHOR	1	1	55
3563	10' EXTENSION FOR MULTI HELIX SCREW ANCHOR	1	1	76



Allied Bolt Products LLC

**EXTENSION FOR MULTI HELIX ANCHOR 7,000 FT LB**

**EXTENSION FOR MULTI HELIX ANCHOR 7,000 FT LBS**

PART#	DESCRIPTION	PKG QTY	CTN QTY	CTN WT.
35600	3-1/2' EXTENSION FOR MULTI HELIX ANCHOR 7,000LB RATING	1	1	27
35610	5' EXTENSION FOR MULTI HELIX ANCHOR 7,000LB RATING	1	1	40
35620	7' EXTENSION FOR MULTI HELIX ANCHOR 7,000LB RATING	1	1	55
35630	10' EXTENSION FOR MULTI HELIX ANCHOR 7,000LB RATING	1	1	76



Allied Bolt Products LLC

**EXTENSION FOR ROUND ROD ANCHOR 2,300 FT LB**

**ROUND ROD EXTENSION FOR ROUND MULTI HELIX ANCHOR**

PART#	DESCRIPTION	PKG QTY	CTN QTY	CTN WT.
3590	3-1/2' ROUND ROD EXTENSION FOR ROUND MULTI HELIX ANCHOR	1	1	27
3591	5' ROUND ROD EXTENSION FOR ROUND MULTI HELIX ANCHOR	1	1	25
3592	7' ROUND ROD EXTENSION FOR ROUND MULTI HELIX ANCHOR	1	1	35
3593	10' ROUND ROD EXTENSION FOR ROUND MULTI HELIX ANCHOR	1	1	76



Allied Bolt Products LLC

**Guy Adaptor For Multi Helix Anchor**

**SINGLE GUY ADAPTOR FOR MULTI HELIX ANCHOR**

PART#	DESCRIPTION	PKG QTY	CTN QTY	CTN WT.
3565	SINGLE GUY ADAPTOR FOR MULTI HELIX ANCHOR	1	1	11



Earth Anchor Power Utility Hardware Catalog

April 18, 2017



Allied Bolt Products LLC

DOUBLE GUY ADAPTOR FOR MULTI HELIX ANCHOR

PART#	DESCRIPTION	PKG QTY	CTN QTY	CTN WT.
3566	DOUBLE GUY ADAPTOR FOR MULTI HELIX ANCHOR	4	1	50



Allied Bolt Products LLC

TRIPLE GUY ADAPTOR FOR MULTI HELIX ANCHOR

PART#	DESCRIPTION	PKG QTY	CTN QTY	CTN WT.
3567	TRIPLE GUY ADAPTOR FOR MULTI HELIX ANCHOR	4	1	52

REPLACEMENT BOLT AND NUT SET FOR ANCHOR EXTENSIONS



Allied Bolt Products LLC

PART#	DESCRIPTION	PKG QTY	CTN QTY	CTN WT.
3560SET	REPLACEMENT BOLT AND NUT SET FOR ANCHOR EXTENSIONS AND ADAPTORS	100	1	36

Non-Power Driven Anchors



Allied Bolt Products LLC

Expanding Rock Anchor w/ Power Rod

Expanding Rock Anchor w/ Power Rod

PART#	DESCRIPTION	PKG QTY	CTN QTY	CTN WT.
55513	1"-8 X 84" EXPANDING ROCK ANCHOR WITH POWER ROD	1	1	26



Allied Bolt Products LLC

No Wrench Screw Anchor

TRIPLE STRAND NO-WRENCH SCREW ANCHOR HELIX

PART#	DESCRIPTION	PKG QTY	CTN QTY	CTN WT.
6044	3/4" X 54" TRIPLE STRAND NO-WRENCH SCREW ANCHOR 4" HELIX	1	1	9
1166	3/4" X 66" TRIPLE STRAND NO-WRENCH SCREW ANCHOR 6" HELIX	1	1	12
1167	1" X 66" TRIPLE STRAND NO-WRENCH SCREW ANCHOR 8" HELIX	1	1	19
1168	1-1/4" X 66" TRIPLE STRAND NO-WRENCH SCREW ANCHOR 10" HELIX	1	1	31
1169	1-1/4" X 96" TRIPLE STRAND NO-WRENCH SCREW ANCHOR 10" HELIX	1	1	42
1163	1-1/4" X 96" TRIPLE STRAND NO-WRENCH SCREW ANCHOR 15" HELIX	1	1	52



**SINGLE STRAND NO-WRENCH SCREW ANCHOR HELIX**

PART#	DESCRIPTION	PKG QTY	CTN QTY	CTN WT.
6044-1	3/4" X 54" SINGLE STRAND NO-WRENCH SCREW ANCHOR 4" HELIX	1	1	9
1166-1	3/4" X 66" SINGLE STRAND NO-WRENCH SCREW ANCHOR 6" HELIX	1	1	12
1167-1	1" X 66" SINGLE STRAND NO-WRENCH SCREW ANCHOR 8" HELIX	1	1	19



**Expanding Rock Anchor**

**3/4" EXPANDING ROCK ANCHOR**

PART#	DESCRIPTION	PKG QTY	CTN QTY	CTN WT.
55500	3/4" X 15" EXPANDING ROCK ANCHOR	5	1	25
55501	3/4" X 30" EXPANDING ROCK ANCHOR	1	1	7
55502	3/4" X 53" EXPANDING ROCK ANCHOR	1	1	10
55503	3/4" X 60" EXPANDING ROCK ANCHOR	1	1	11
55504	3/4" X 72" EXPANDING ROCK ANCHOR	1	1	12
55505	3/4" X 84" EXPANDING ROCK ANCHOR	1	1	13
55506	3/4" X 96" EXPANDING ROCK ANCHOR	1	1	15



**1" EXPANDING ROCK ANCHOR**

PART#	DESCRIPTION	PKG QTY	CTN QTY	CTN WT.
55508	1" X 30" EXPANDING ROCK ANCHOR	1	1	14
55509	1" X 53" EXPANDING ROCK ANCHOR	1	1	18
55510	1" X 72" EXPANDING ROCK ANCHOR	1	1	24
55511	1" X 84" EXPANDING ROCK ANCHOR	1	1	26
55512	1" X 96" EXPANDING ROCK ANCHOR	1	1	29



**Cross Plate Anchor**

**16" CROSSPLATE ANCHOR**

PART#	DESCRIPTION	PKG QTY	CTN QTY	CTN WT.
3950	16" CROSSPLATE ANCHOR FOR 5/8" OR 3/4" ROD	5	1	49



**20" CROSSPLATE ANCHOR FOR**

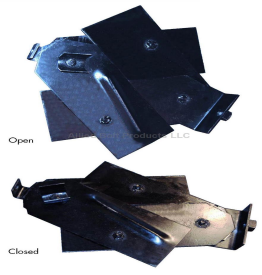
PART#	DESCRIPTION	PKG QTY	CTN QTY	CTN WT.
3951	20" CROSSPLATE ANCHOR FOR 5/8" or 3/4" RODS	4	1	59
3952	20" CROSSPLATE ANCHOR FOR 1" RODS	4	1	62



**24" CROSSPLATE ANCHOR**

PART#	DESCRIPTION	PKG QTY	CTN QTY	CTN WT.
3953	24" CROSSPLATE ANCHOR FOR 5/8" OR 3/4" ROD	2	1	68
3954	24" CROSSPLATE ANCHOR FOR 1" ROD	2	1	62
3955	24" CROSSPLATE ANCHOR FOR 1-1/4" ROD	2	1	66





**Expanding Pole Key Anchor**

PART#	DESCRIPTION	PKG QTY	CTN QTY	CTN WT.
3965	27-1/4" EXPANDING POLE KEY ANCHOR	1	4	92

**Bust Anchor**  
**EXPANDING ANCHOR**



PART#	DESCRIPTION	PKG QTY	CTN QTY	CTN WT.
19020	6" EXPANDING ANCHOR FOR 1/2" OR 5/8" ROD	1	1	5
19021	8" EXPANDING ANCHOR FOR 3/4" ROD	1	1	10
19023	10" EXPANDING ANCHOR FOR 3/4" ROD	1	1	21
19022	10" EXPANDING ANCHOR FOR 1" ROD	1	1	20
19024	12" EXPANDING ANCHOR FOR 1" ROD	1	1	33
19025	12" EXPANDING ANCHOR FOR 1-1/4" ROD	1	1	33

**Tamping Tools**



**Tamping Bar**  
**TAMPING BAR**

PART#	DESCRIPTION	PKG QTY	CTN QTY	CTN WT.
10TAMP	10' TAMPING BAR	1	1	24
12TAMP	12' TAMPING BAR	1	1	29

**Extensions for No Wrench Anchors and Anchor Rods**



**Forged Extension For No Wrench Anchor**  
**FORGED EXTENSION FOR NO WRENCH ANCHOR**

PART#	DESCRIPTION	PKG QTY	CTN QTY	CTN WT.
1160	1-1/4" X 24" FORGED EXTENSION FOR NO WRENCH ANCHOR	2	1	25
1161	1-1/4" X 36" FORGED EXTENSION FOR NO WRENCH ANCHOR	1	1	12
1165	1-1/4" X 72" FORGED EXTENSION FOR NO WRENCH ANCHOR	1	1	28

**Anchor Rods and Accessories**



**Protected Anchor Rod**  
**3/4" SINGLE STRAND PROTECTED ANCHOR ROD**

PART#	DESCRIPTION	PKG QTY	CTN QTY	CTN WT.
4154PRO	3/4" X 7" SINGLE STRAND PROTECTED ANCHOR ROD	1	1	11
4155PRO	3/4" X 8" SINGLE STRAND PROTECTED ANCHOR ROD	1	1	12
4156PRO	3/4" X 10" SINGLE STRAND PROTECTED ANCHOR ROD	1	1	17



**3/4" DOUBLE STRAND PROTECTED ANCHOR ROD**

PART#	DESCRIPTION	PKG QTY	CTN QTY	CTN WT.
4169PRO	3/4" X 7" DOUBLE STRAND PROTECTED ANCHOR ROD	1	1	11
4170PRO	3/4" X 8" DOUBLE STRAND PROTECTED ANCHOR ROD	1	1	13
4171PRO	3/4" X 9" DOUBLE STRAND PROTECTED ANCHOR ROD	1	1	14
4172PRO	3/4" X 10" DOUBLE STRAND PROTECTED ANCHOR ROD	1	1	18



**1" DOUBLE STRAND PROTECTED ANCHOR ROD**

PART#	DESCRIPTION	PKG QTY	CTN QTY	CTN WT.
4173PRO	1" X 8" DOUBLE STRAND PROTECTED ANCHOR ROD	1	1	24
4174PRO	1" X 10" DOUBLE STRAND PROTECTED ANCHOR ROD	1	1	27



**3/4" TRIPLE STRAND PROTECTED ANCHOR ROD**

PART#	DESCRIPTION	PKG QTY	CTN QTY	CTN WT.
4180PRO	3/4" X 8" TRIPLE STRAND PROTECTED ANCHOR ROD	1	1	13
4181PRO	3/4" X 9" TRIPLE STRAND PROTECTED ANCHOR ROD	1	1	15



**1" TRIPLE STRAND PROTECTED ANCHOR ROD**

PART#	DESCRIPTION	PKG QTY	CTN QTY	CTN WT.
4182PRO	1" X 8" TRIPLE STRAND PROTECTED ANCHOR ROD	1	1	24
4183PRO	1" X 10" TRIPLE STRAND PROTECTED ANCHOR ROD	1	1	30



**Heavy Square Nut**  
**HEAVY SQUARE NUT**

PART#	DESCRIPTION	PKG QTY	CTN QTY	CTN WT.
8378	5/8"-11 HEAVY SQUARE NUT	100	1	20
8376	3/4"-10 HEAVY SQUARE NUT	100	1	20
8377	1"-8 HEAVY SQUARE NUT	100	1	46
8379	1-1/4"-7 HEAVY SQUARE NUT	50	1	40



**Anchor Rod Auxiliary Eye**  
**ANCHOR ROD AUXILIARY EYE**

PART#	DESCRIPTION	PKG QTY	CTN QTY	CTN WT.
3160	5/8"-3/4" ANCHOR ROD AUXILIARY EYE	5	1	14
3162	1/2"-1-1/4" ANCHOR ROD AUXILIARY EYE	5	1	16



Bonding Clamp For Anchor Rods and Screw Anchors  
**SINGLE STRAND BONDING CLAMP FOR ANCHOR RODS AND SCREW ANCHORS**

PART#	DESCRIPTION	PKG QTY	CTN QTY	CTN WT.
7905	SINGLE STRAND BONDING CLAMP FOR ANCHOR RODS AND SCREW ANCHORS ROD DIAMETER 5/8", 3/4" & 1"	50	1	9



**DOUBLE STRAND BONDING CLAMP FOR ANCHOR RODS AND SCREW ANCHORS**

PART#	DESCRIPTION	PKG QTY	CTN QTY	CTN WT.
7906	DOUBLE STRAND BONDING CLAMP FOR ANCHOR RODS AND SCREW ANCHORS ROD DIAMETER 5/8", 3/4" & 1"	50	1	7



**TRIPLE STRAND BONDING CLAMP FOR ANCHOR RODS AND SCREW ANCHORS**

PART#	DESCRIPTION	PKG QTY	CTN QTY	CTN WT.
7907	TRIPLE STRAND BONDING CLAMP FOR ANCHOR RODS AND SCREW ANCHORS ROD DIAMETER 3/4", 1" & 1-1/4"	50	1	13

**Anchor Installing Tools**

DISPLAY MONITOR  
**LCD DISPLAY**



PART#	DESCRIPTION	PKG QTY	CTN QTY	CTN WT.
3549	4.3" LCD DISPLAY FOR TORQUE PIN	1	1	19

TORQUE PIN



PART#	DESCRIPTION	PKG QTY	CTN QTY	CTN WT.
3548	TORQUE PIN	1	1	1

KELLY BAR ADAPTER  
**KELLY BAR ADAPTER - 10,000 LBS**

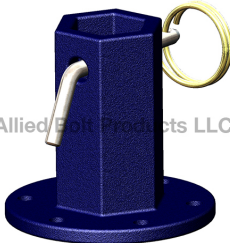


PART#	DESCRIPTION	PKG QTY	CTN QTY	CTN WT.
3540	2" KELLY BAR ADAPTER 10,000 LBS	1	1	10
3541	2-1/2" KELLY BAR ADAPTER 10,000 LBS	1	1	41
3542	2-5/8" KELLY BAR ADAPTER 10,000 LBS	1	1	12



**Earth Anchor Power Utility Hardware Catalog**

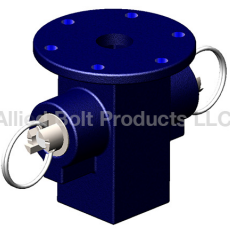
April 18, 2017



**KELLY BAR ADAPTER - 20,000 LBS**

PART#	DESCRIPTION	PKG QTY	CTN QTY	CTN WT.
3543	2-1/2" KELLY BAR ADAPTER 20,000 LBS	1	1	23
3544	2-5/8" KELLY BAR ADAPTER 20,000 LBS	1	1	23
3545	3" KELLY BAR ADAPTER 20,000 LBS	1	1	27

Allied Bolt Products LLC



**LOCKING DOG ASSEMBLY**

PART#	DESCRIPTION	PKG QTY	CTN QTY	CTN WT.
3546	2.16" LOCKING DOG ASSEMBLY	1	1	20
3547	2.44" LOCKING DOG ASSEMBLY	1	1	26

Allied Bolt Products LLC



**SQUARE DRIVE TOOL FOR MULTI HELIX SCREW ANCHOR**  
**SQUARE DRIVE TOOL**

PART#	DESCRIPTION	PKG QTY	CTN QTY	CTN WT.
3564	1-1/2" SQUARE DRIVE TOOL FOR MULTI HELIX SCREW ANCHORS	1	1	7

Allied Bolt Products LLC



**ANCHOR WRENCH TOOL**  
**WRENCH TUBE YELLOW**

PART#	DESCRIPTION	PKG QTY	CTN QTY	CTN WT.
3537	WRENCH TUBE 2.16"/2.44" X 42" YELLOW	1	1	29
3536	WRENCH TUBE 2.16"/2.44" X 84" YELLOW	1	1	64

Allied Bolt Products LLC



**WRENCH TUBE ORANGE**

PART#	DESCRIPTION	PKG QTY	CTN QTY	CTN WT.
3535	WRENCH TUBE 2.16" X 42" ORANGE	1	1	29
3534	WRENCH TUBE 2.16" X 84" ORANGE	1	1	57

Allied Bolt Products LLC



**WRENCH TUBE RED**

PART#	DESCRIPTION	PKG QTY	CTN QTY	CTN WT.
3539	WRENCH TUBE 2.44" X 42" RED	1	1	32
3538	WRENCH TUBE 2.44" X 84" RED	1	1	71

Allied Bolt Products LLC